



**SMART METERING
SOLUTIONS**

NIK in figures

21

years in energy market

12

million devices
deployed

3

factories
Ukraine, Vyshhorod
Turkey, Izmir
Czech Rep., Prague

150 000

monthly
production capacity

540

employees

84%

local market coverage

Areas of expertise



Complex customer oriented approach.
Fast and flexible turning customer's requirements into finished product.



Closed loop customized production.
From product development to after warranty service and recycling.



High production quality standards.

- ISO/IEC 17025, MID 2014/32/EN, EN 50470-1,3 compliance.
- QMS ISO 9001 and EMS ISO 14001 certified.

For whom



Energy companies



Solar stations



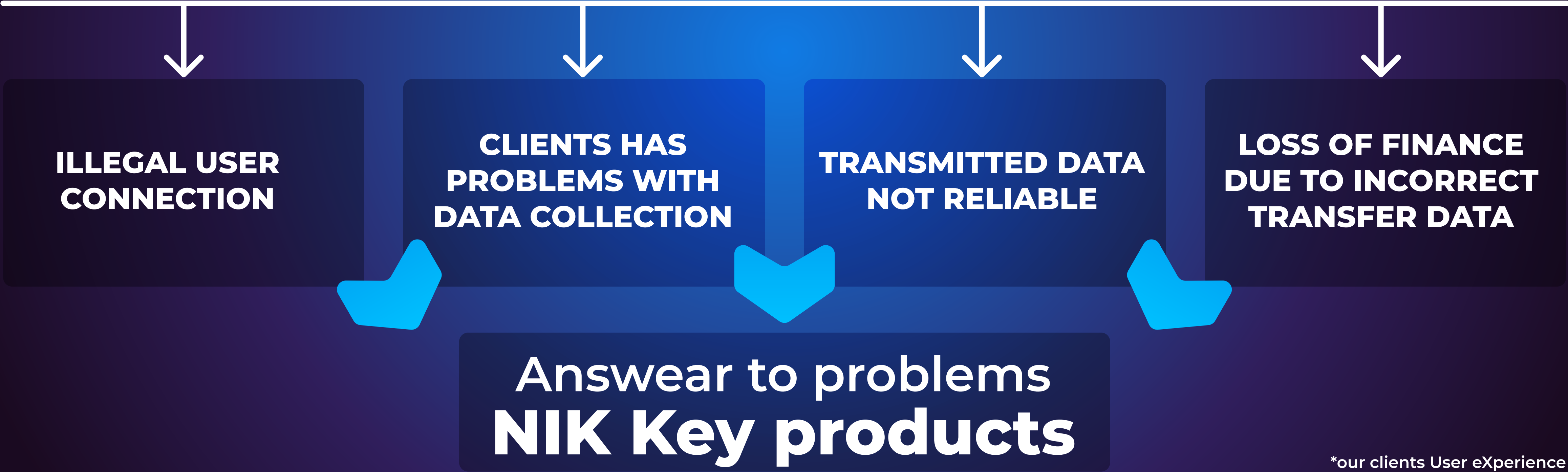
Factories



Enterprise



House management



*our clients User eXperience

Key Products

Company core business -
development and implementation smart systems for
automated data collection from resource meters

From project development to launching and service



AMI
for
Energy
Companies up
to 200 kV

**HV grids up to
700 kV
Smart meters**



**Energy
resources
meters**



Smart meters



**Water, gas and
heat meters**



**Communication
modules**

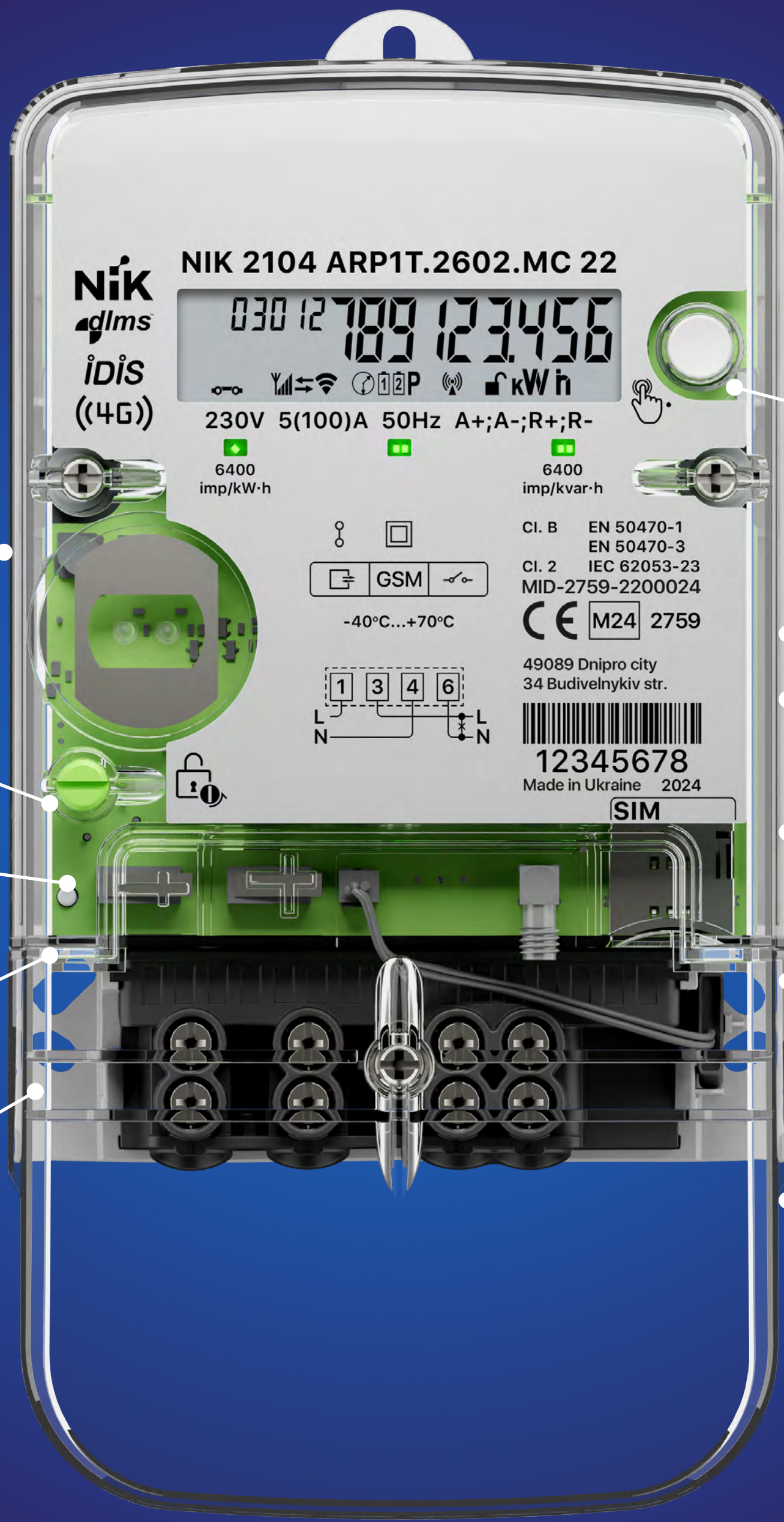
NIK 2100

single phase meter



NIK 2104

single phase meter



Din rail mounting
(optional)

Button "Reset"

Latching relay 100A
(optional)

Load profile 180 days

Active/Active and reactive
energy
A+ (base)
A-|R+|R- (optional)

- View data button
- Wireless M-Bus module
for reading water and gas
devices
- Tamper Protection
- Interfaces:
GPRS, 4G/LTE, NB-IoT,
PLC, RS485
- 2 measuring elements
(optional)
- Terminal block
for various standards

NIK 2106

single phase meter
with replaceable interface modules

Accuracy rating
(Active CL 1, Reactive CL 2)

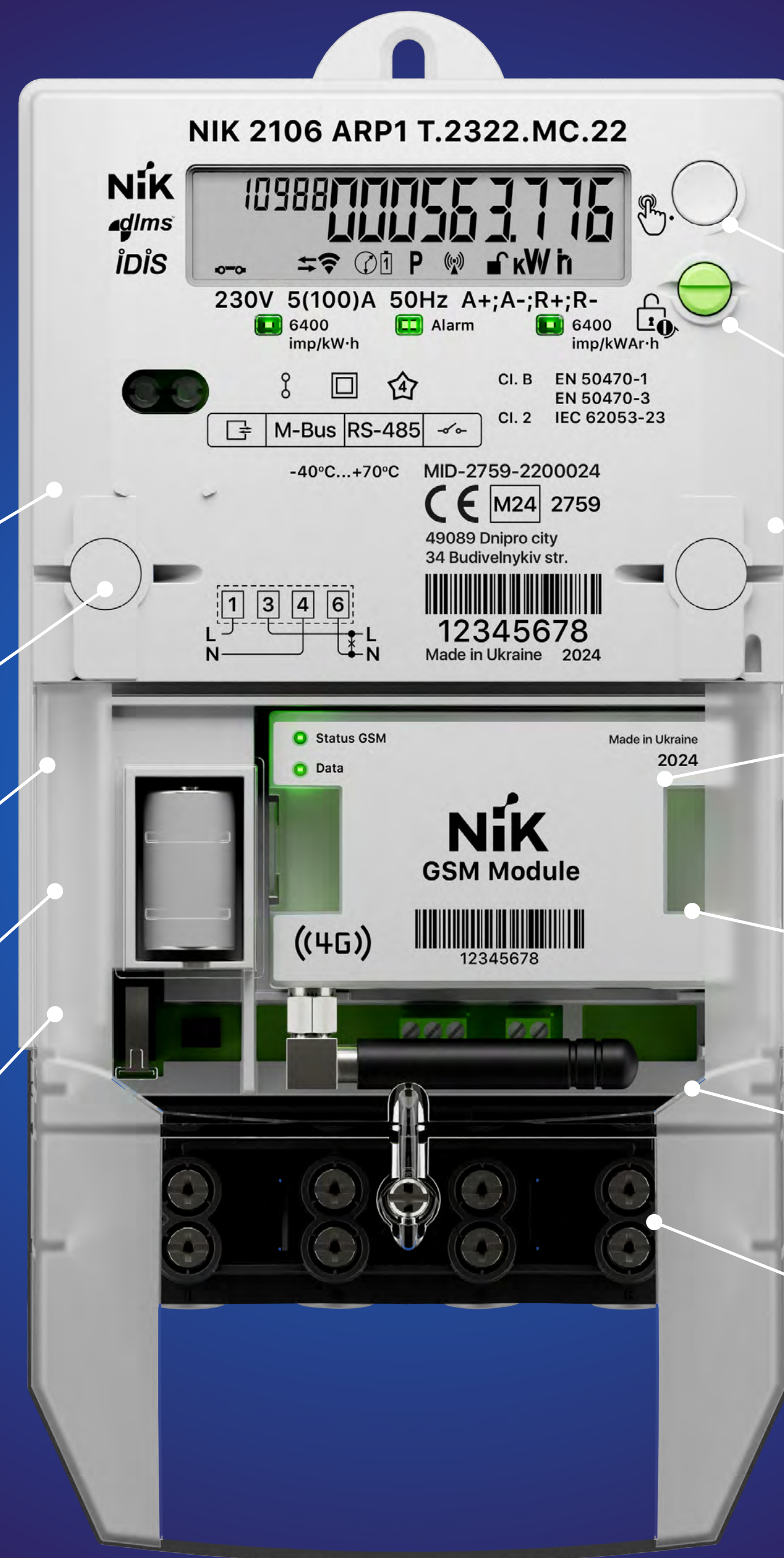
Din rail mounting

Tamper Protection

4 tariffs / 12 zones

Load profile 180 days

Data collection from gas,
heat, water meters
(Master Meter)



View data button

Reset data button

Plug&Play module

1. RS485 or 2xRS-485
(on board)
2. GSM or PLC (module)

Last GASP
(last breath function)

Latching relay 100A
(optional)

Active/Active and reactive
energy A+|A-|R+|R-

CE
dlms
iDis
G3-PLC
Alliance

NIK 2300

three phase meter



Din rail mounting (optional)

Tamper Protection

Latching relay 100A (optional)

Wireless M-Bus module for reading water, heat and gas meters

Active/Active and reactive energy $A+|A-|R+|R-$



Interface: RS-485, PLC (optional)

Accuracy rating CT/VT- CL 0.5 S Direct - CL 1

For direct connection 120 A and CT/VT connection 10 A, 57,7 V

Load profile 180 days

4 tariffs / 12 zones

NIK 2307 D
three phase meter
Accuracy rating
(Trafo CL 0.5 S, Direct CL 1)

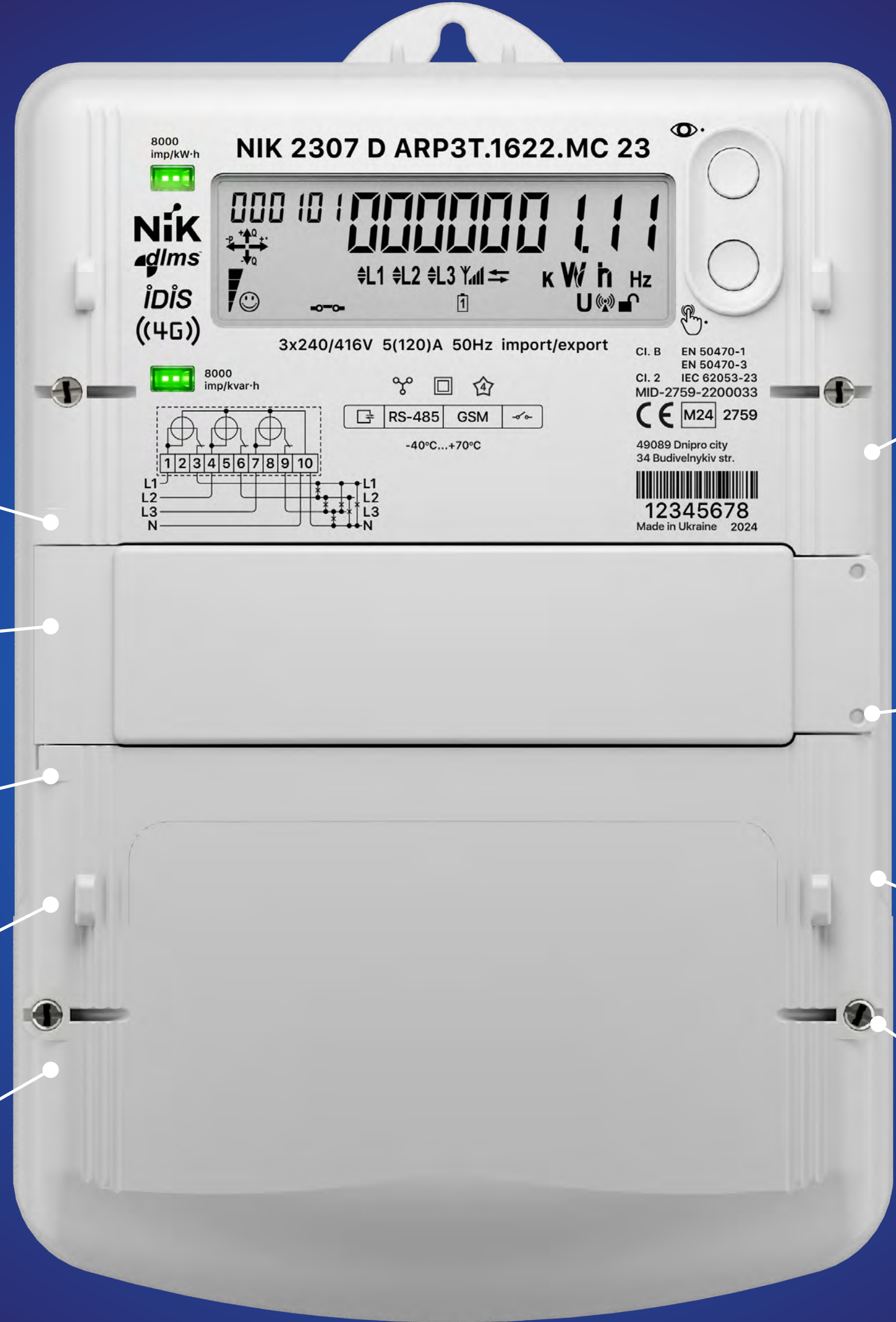
Din rail mounting

Tamper Protection

Load profile 180 days

4 tariffs / 12 zones

Active/Active and reactive
energy A+|A-|R+|R-



Two interfaces:
1. RS-485
2. RS-485, GPRS, 4G/LTE,
Ethernet, PLC (optional)

Cover for blocking the
opto port and battery
compartment

Last GASP
(last breath function)

For direct connection
120 A and CT/VT
connection 10 A, 57,7 V



NIK 2306

three phase meter
with replaceable interface modules



Tamper Protection

Data collection from gas, heat, water meters (Master Meter)

4 tariffs / 12 zones

Load profile 180 days

Active/Active and reactive energy $A+|A-|R+|R-$

NIK 2306 ARP1 T.2322.MC.22

0000110015732.17

3x230/400V 5(100)A 50Hz import/export

8000 imp/kWh 8000 imp/kvar-h

M-Bus RS-485

49089 Dnipro city 34 Budivelnikiv str.

12345678

Made in Ukraine 2024

NIK GSM Module

((4G))

12345678

Made in Ukraine 2024

View data button

Reset data button

Plag&Play module

Last GASP (last breath function)

View data button

1. Reset data button

2. Plag&Play module

For direct connection 120 A and CT/VT connection 10 A, 57,7 V

NIK 2106 Prepayment Meter

single phase meter

Accuracy rating

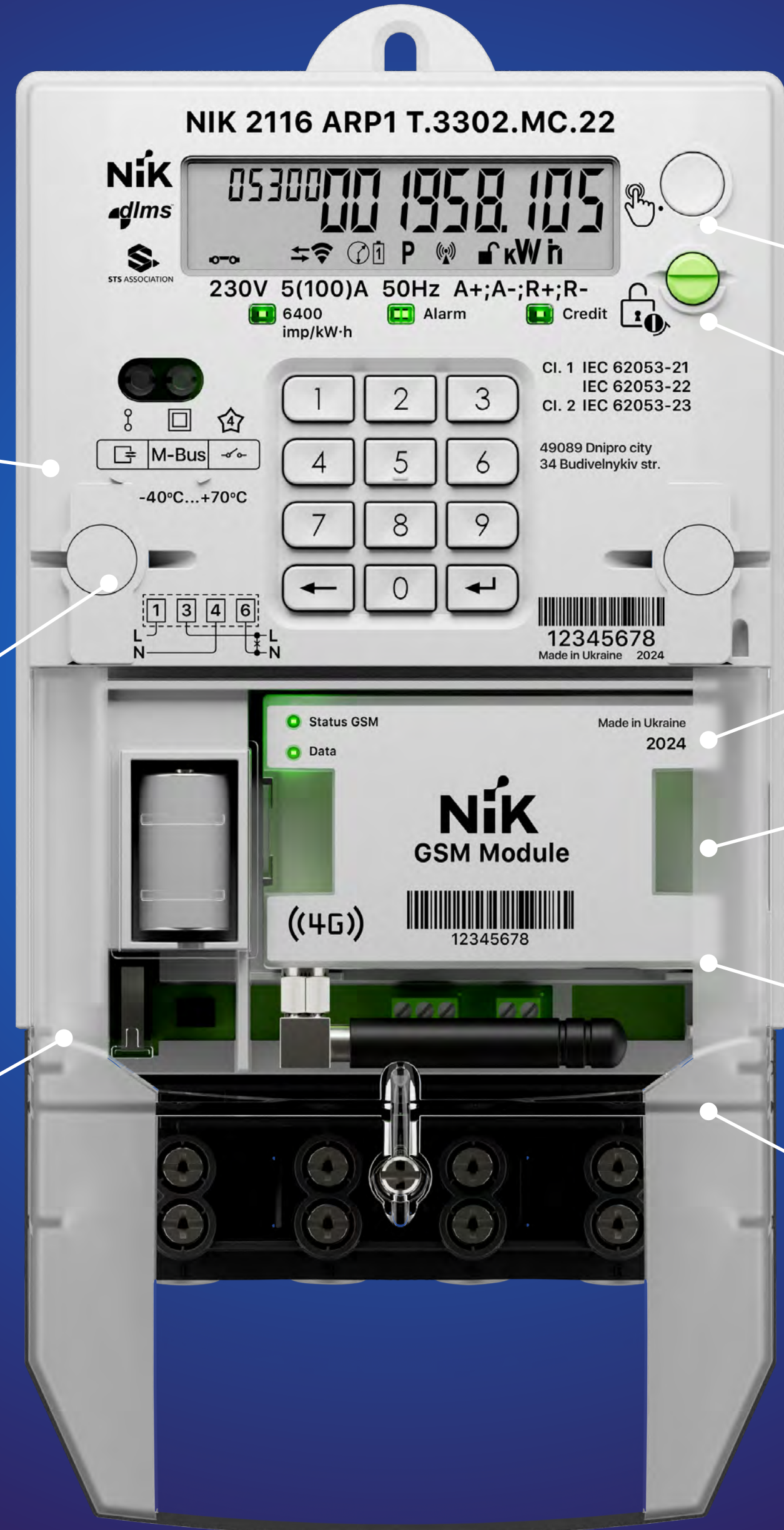
(Active CL 1, Reactive CL 2)



NIK 2116 Prepayment Meter

single phase meter

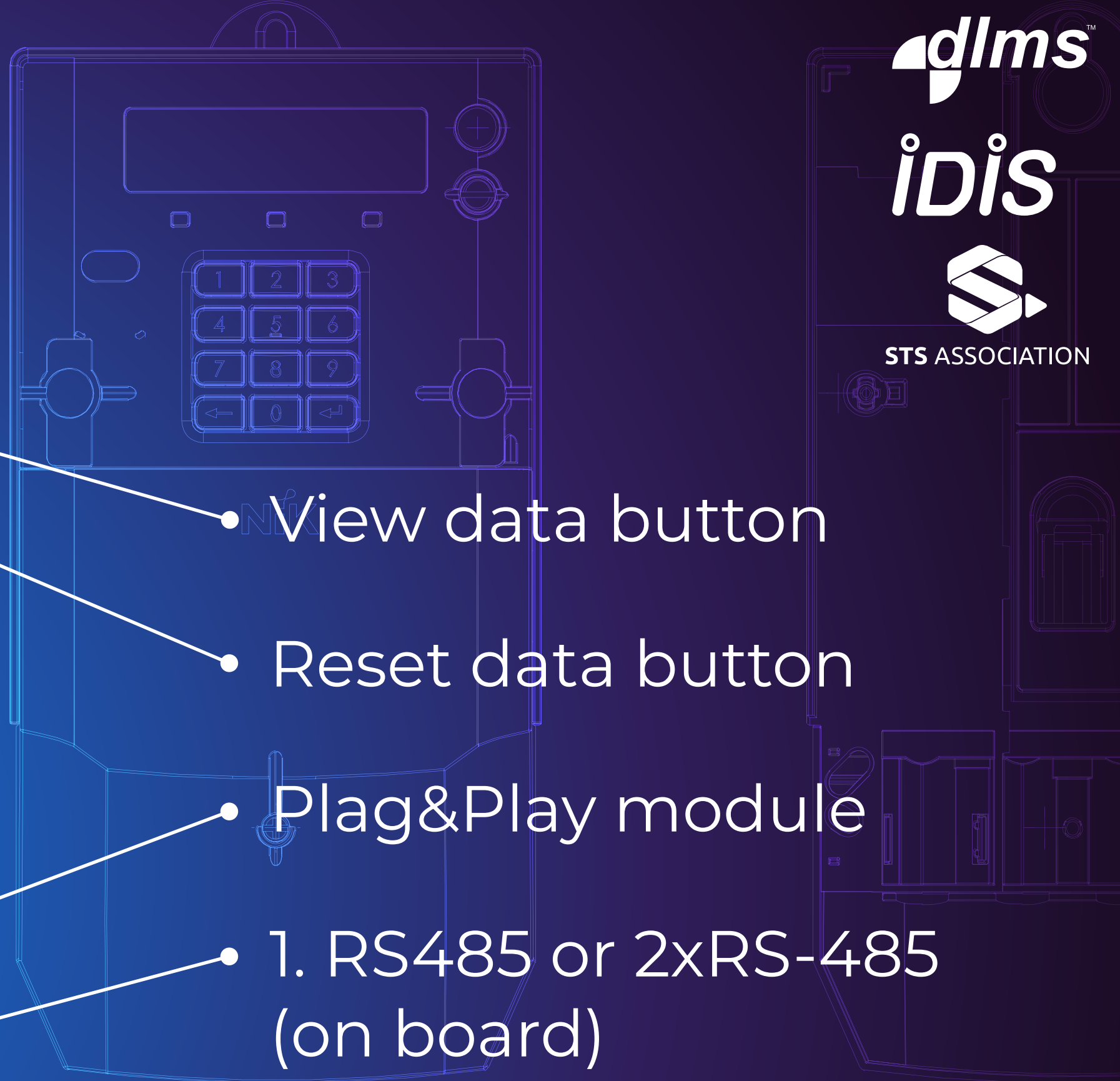
Accuracy rating
(Active CL 1, Reactive CL 2)



Prepayment system STS

Tamper Protection

Active/Active and reactive energy A+|A-|R+|R-



View data button

Reset data button

Plag&Play module

- 1. RS485 or 2xRS-485 (on board)
- 2. GSM or PLC (module)

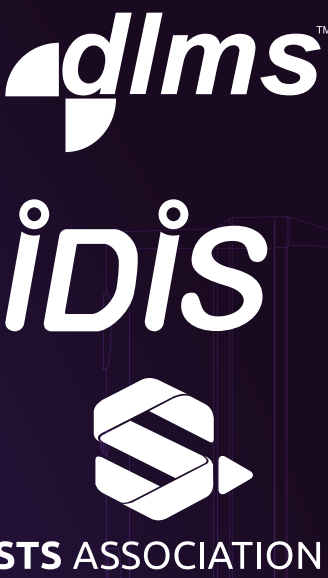
Last GASP (last breath function)

Latching relay 100A (optional)



NIK 2316

three phase meter
with replaceable interface modules



Tamper Protection

Prepayment system STS

Tamper Protection

Active/Active and reactive
energy A+|A-|R+|R-

View data button

Reset data button

Plug&Play module

1. RS485 or 2xRS-485 (on board)

2. GSM or PLC (module)

Last GASP
(last breath function)

For direct connection
120 A and CT/VT
connection 10 A, 57,7 V

NIK KC-02

data concentrator unit



External antenna

DIN rail mounting

Main: GPRS Optional:
RS-485/4G/LTE/PLC

Connections of
two-sectional substations
due to double power
supply and 2 PLC
interfaces

I / O module

Data storage 4 Gb

OS Linux

Capacity up to 1500
end-users

NIK A-GSM

communication module



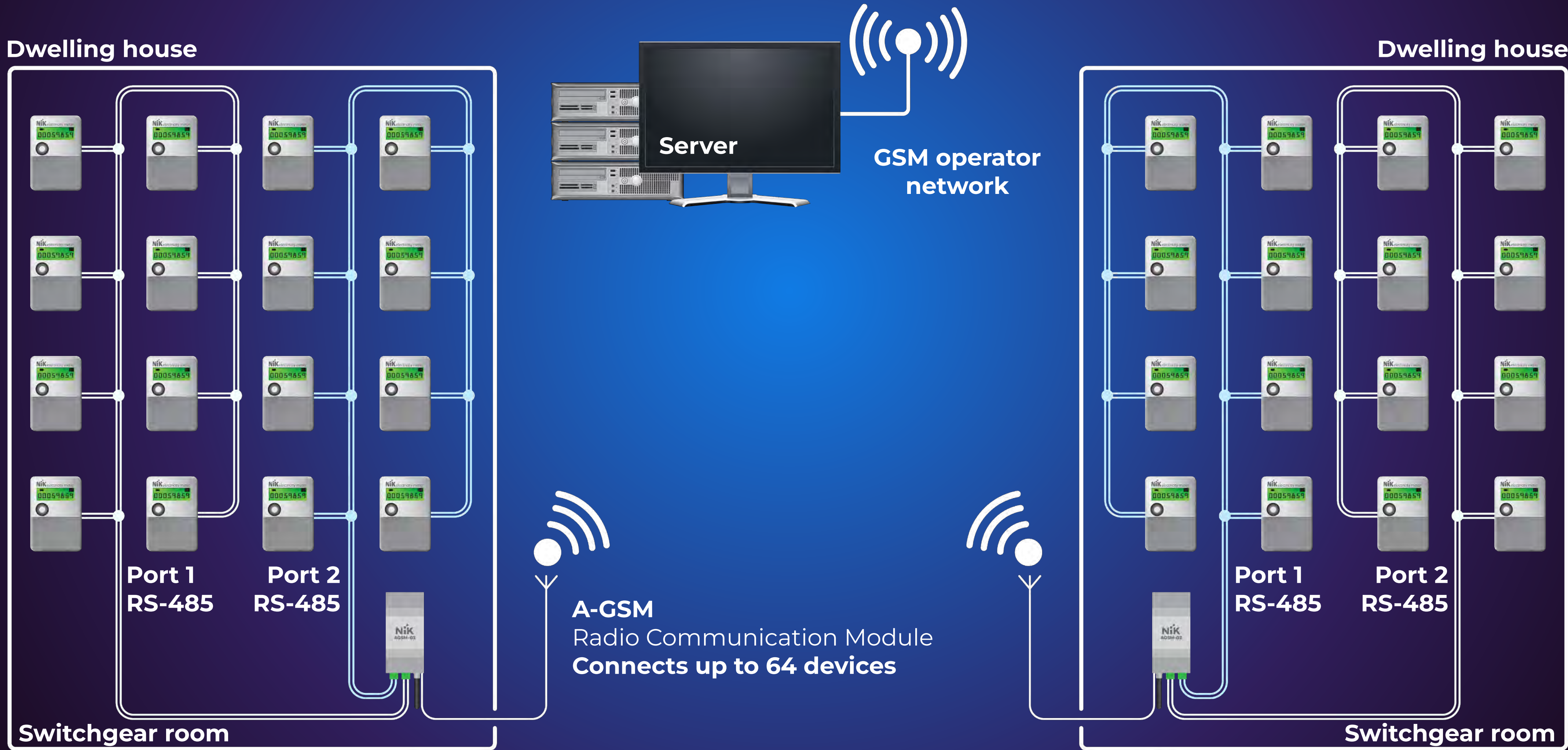
NIK Accessories

click seal and metal wire



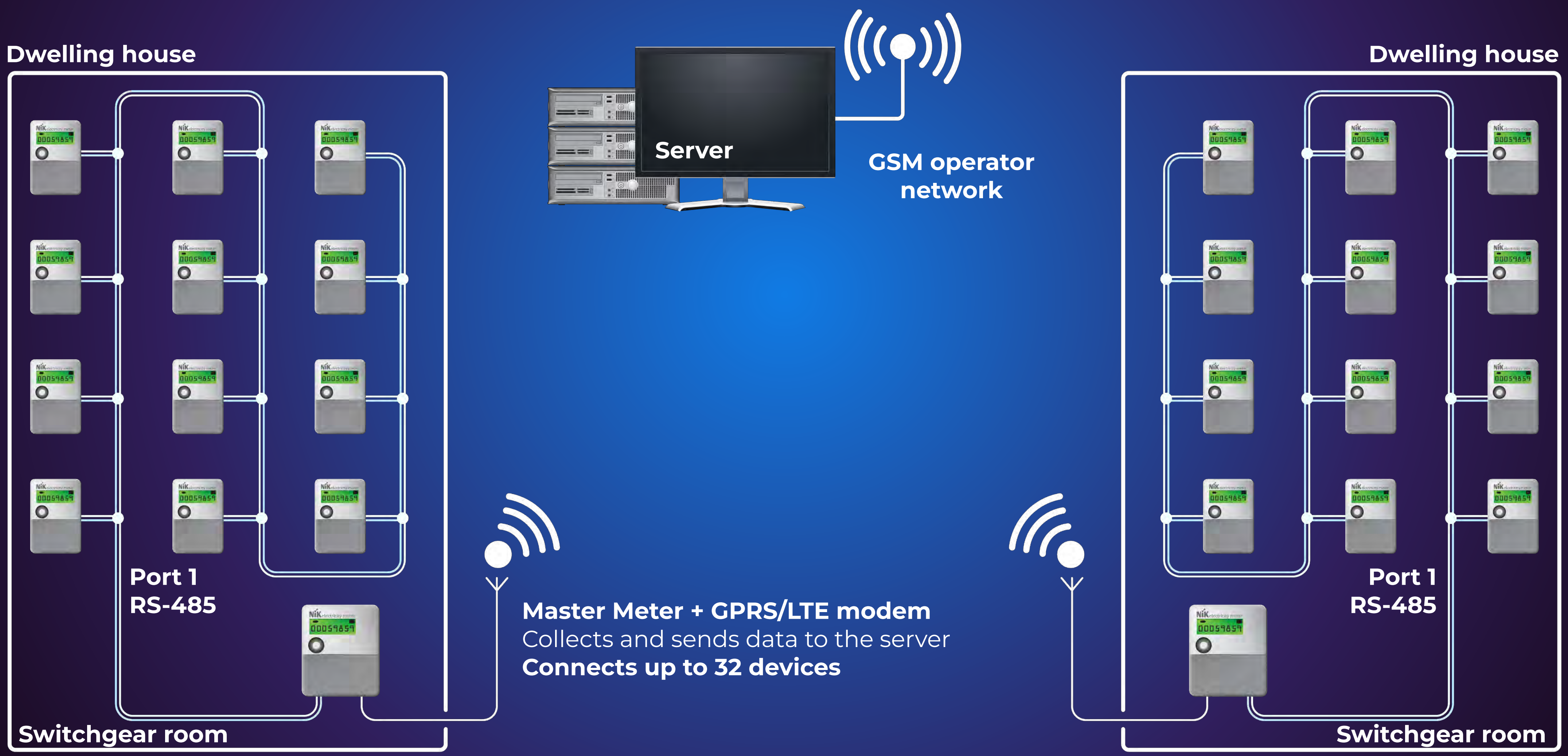
Operational scheme

RS-485 based AMI topology + A-GSM



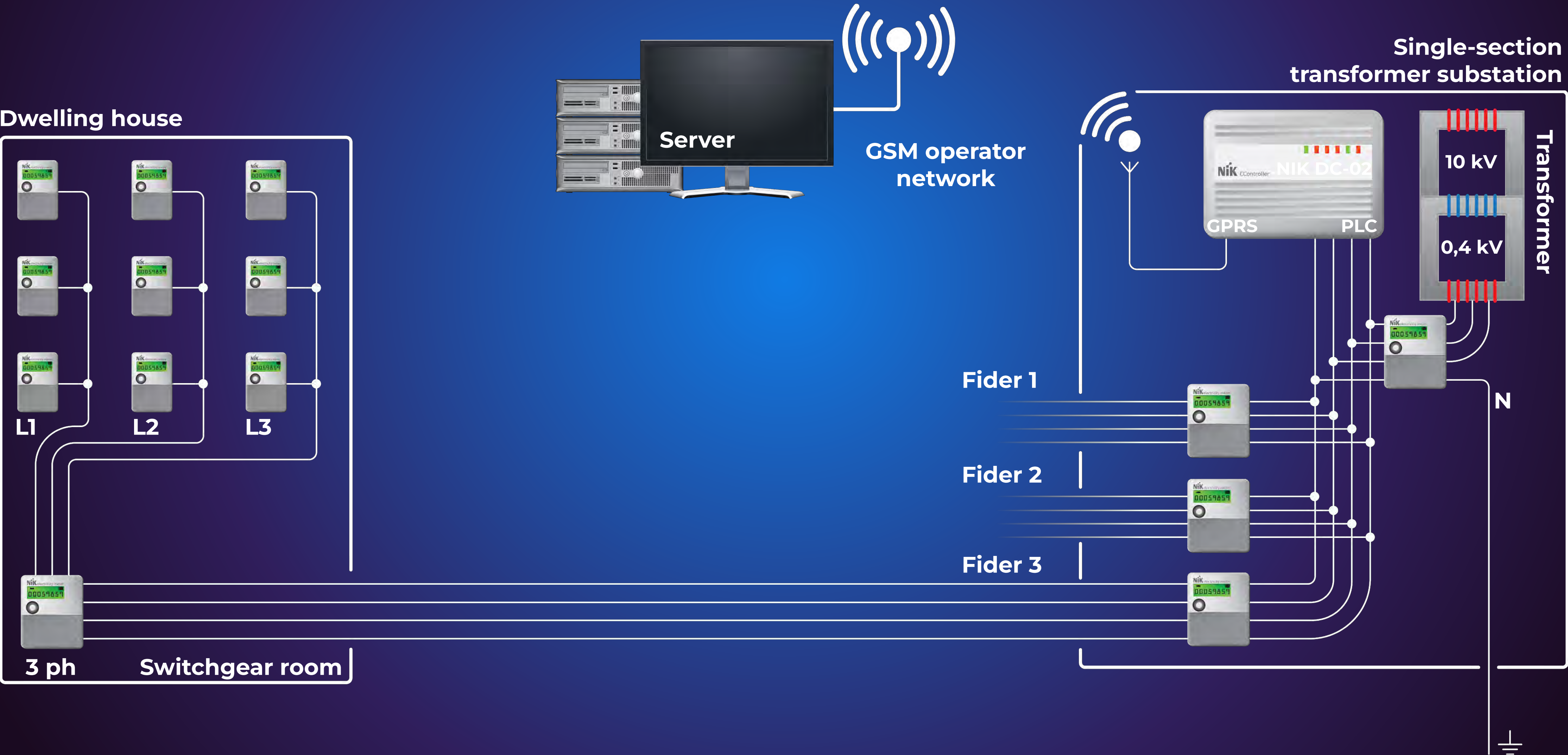
Operational scheme

RS-485 based AMI topology + Master Meter



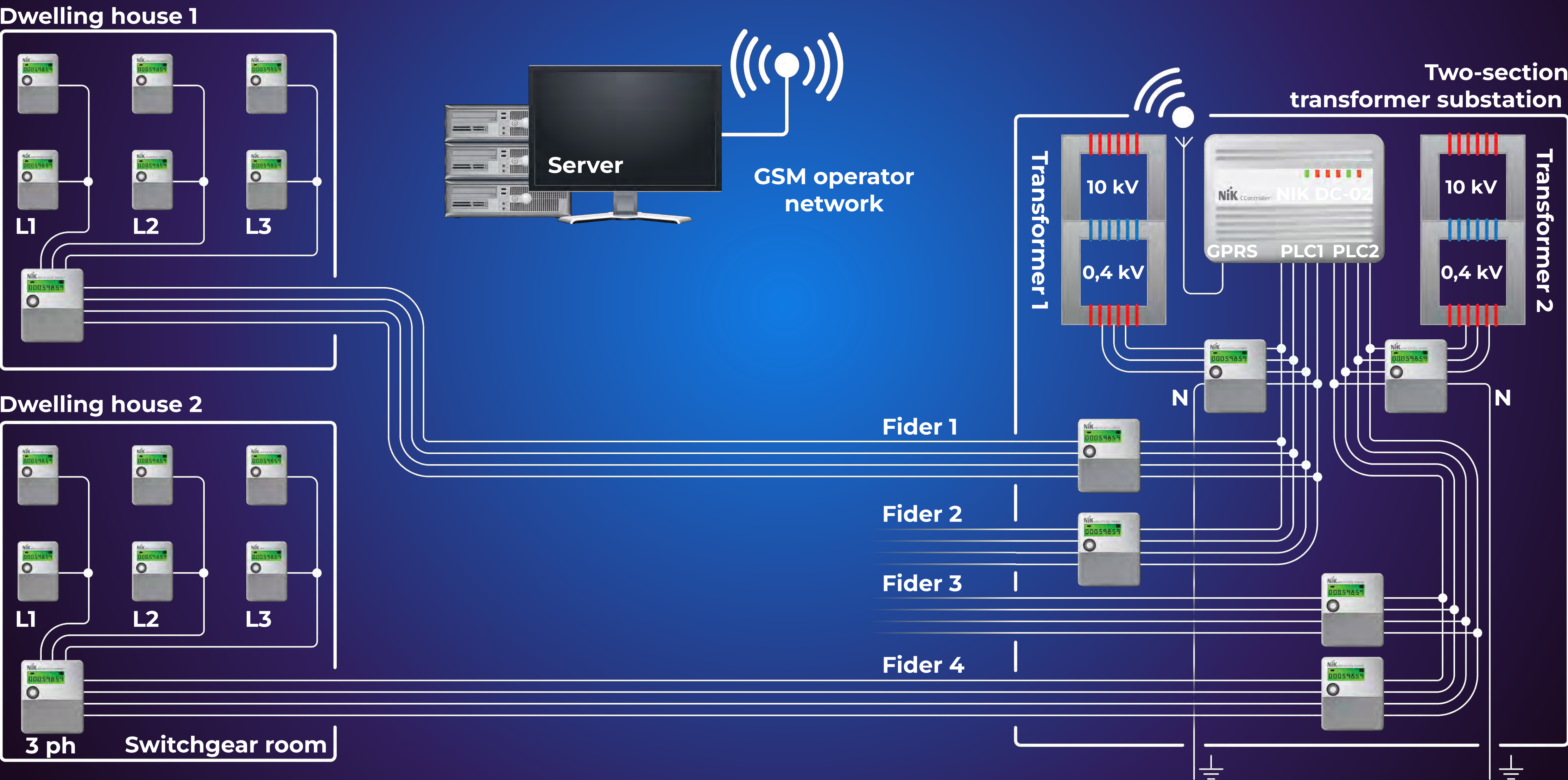
Operational scheme

G3-PLC, PRIME, based AMI topology. Single-section transformer substation



Operational scheme

G3-PLC, PRIME, based AMI topology. Two-section transformer substation



PLC (Power Line Connection)

data transmission technology

Standard	G3-PLC	PLC DCSK	PRIME
Modulation	OFDM	DCSK	OFDM
Noise immunity	+	+	-
Data transfer rate, Kbps	up to 123	0,625-2,5	up to 123
Frequency range, kHz	35-89 or 35-89 (CEN A) 200-500 (FCC)	9-95 (CEN A)	35-89 (CEN A)
The ability to communicate through transformers, the communication range without repeaters can reach 10 km, this feature reduces the number of hubs to the maximum effective number, which reduces the overall cost of the project.	+	+	-
The presence of the 6LoWPAN layer, which allows the transmission of IPv6 packets for integration with the Internet	+	-	-
Supports SFSK devices, but allows parallel operation with them on the same line	+	+	-

AMI systems

electricity, heat and water

NiK SPACE

 NovaSyS®



Data integration and exchange with external systems, cloud storage, building systems, internal programs



Interact with end-user via personal account and mobile app



Instant detection and notification of illegal connections and interactions



Analitics, Statystics, Reports

AMI systems



**OUR PARTNERS
CHOOSE**

**NiK SPACE
and**



FOR

**EASY DATA
MANAGEMENT**

**BUSINESS
DEVELOPMENT**

**SMOOTH DATA
EXCHANGE**

**LABOR EXPENSES
OPTIMIZATION**

**REDUCE TIME FOR
DATA CHECK-UP**

**SIGNIFICANT
COST SAVING**

Meet our young and progressive team



<60 SPECIALISTS
in R&D department



GRANT PROGRAM
for interns and students



35 YEARS
average age

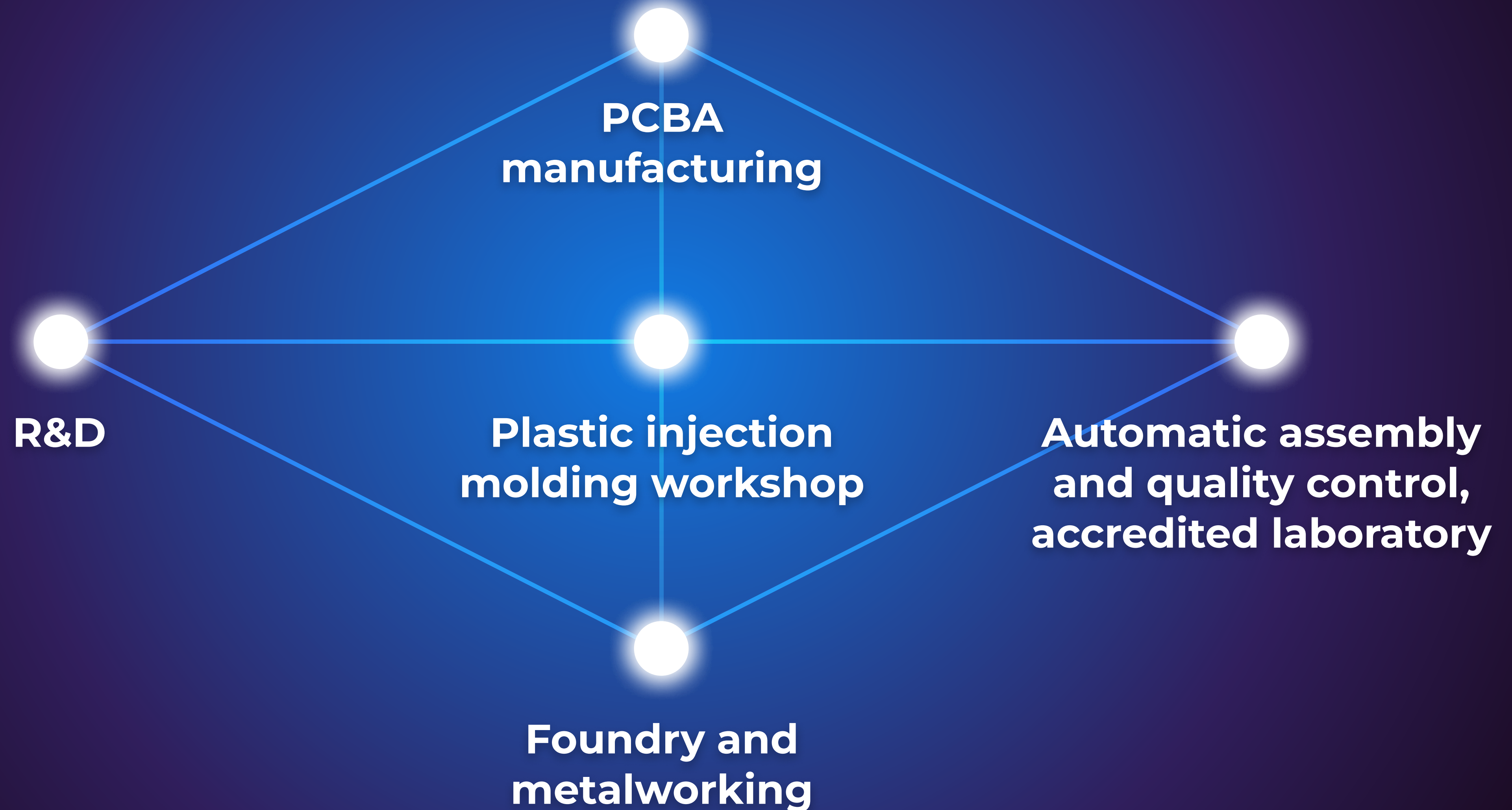


SPECIALISTS
with master degree



SHARE OF PROFIT INVESTED
in new product development

Closed loop manufacturing

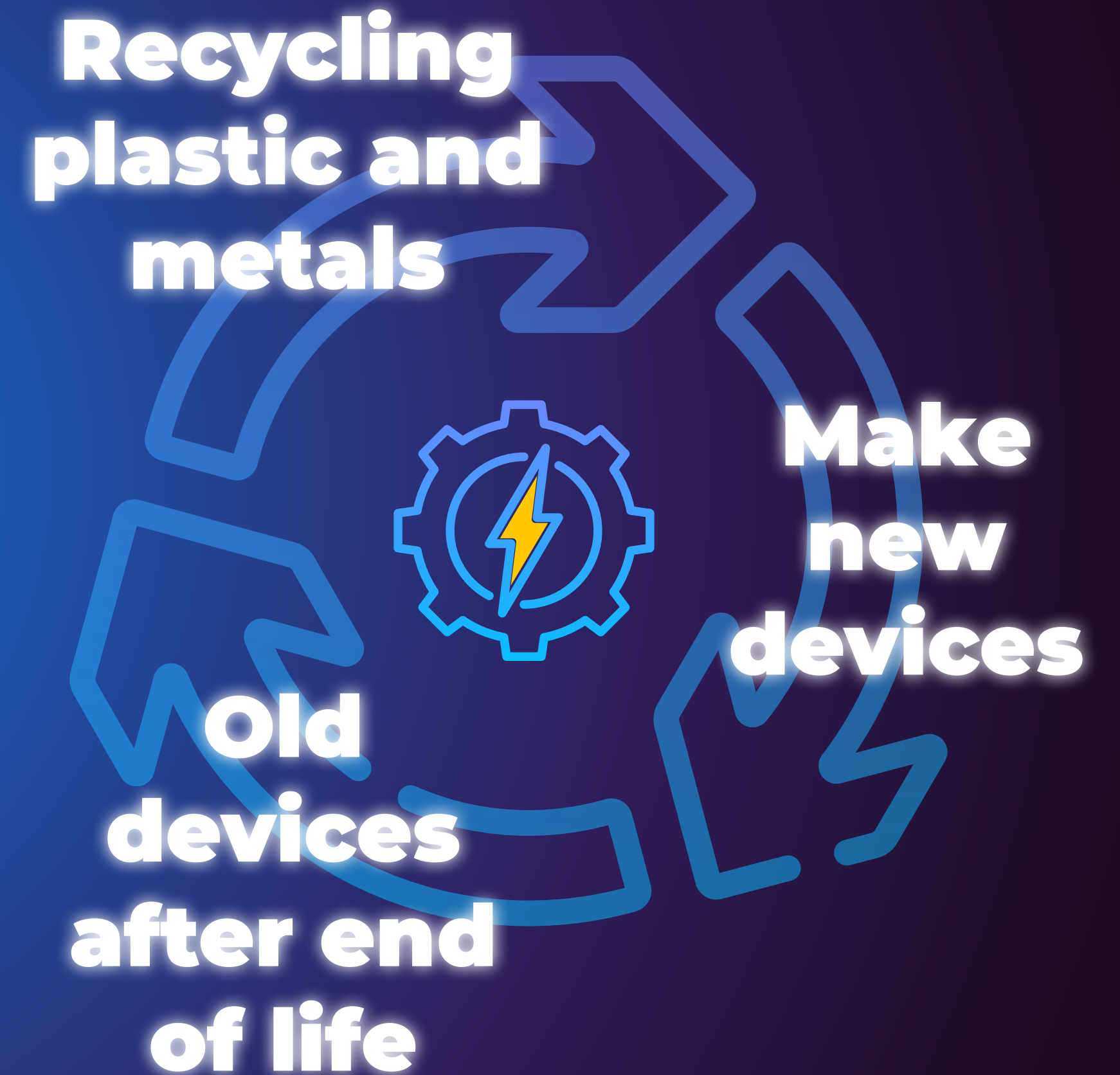


Sustainable practices

We care about future of our planet and prioritise ecology

We recycle brass scrap and make terminals for our meters

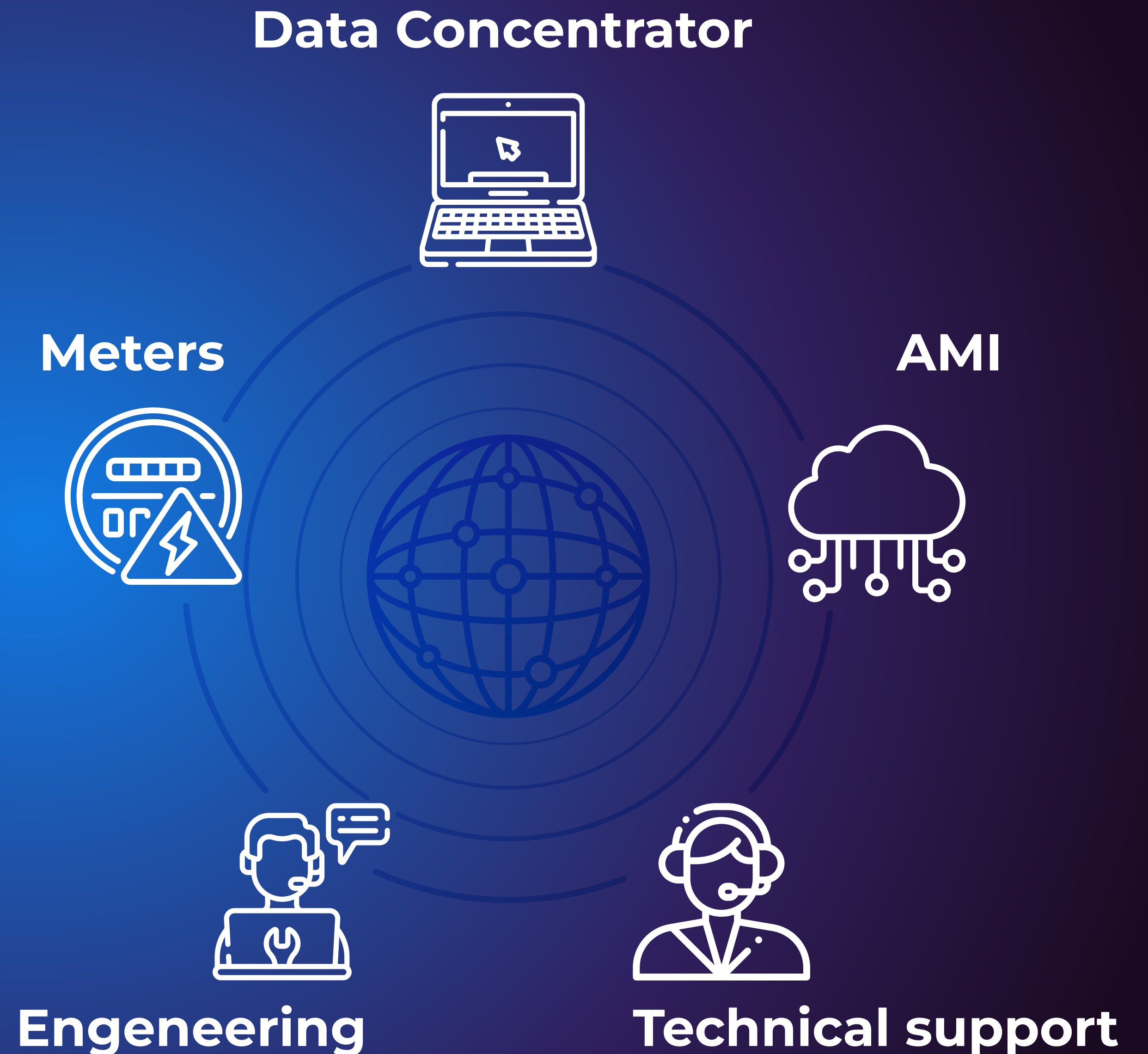
We are ready to take old devices from Europe for recycling



Why NiK

COMPLEX SOLUTIONS

PLC Soft
developing & adaptation



Thanks for attention!

 <https://www.nik-global.com>

 office@nik-metering.com  info@nik-global.com

NIK Metering Iberica S.L.
Valencia, Spain

 +34 961 154 115

NIK Central Europe s.r.o
Praha, Czech

 +420 77 321 72 98

NIK Elektronik
İzmir, Türkiye

 +90 232 486 43 89